

Eclipse RatioAir Burners

Model RA1500

Version 1

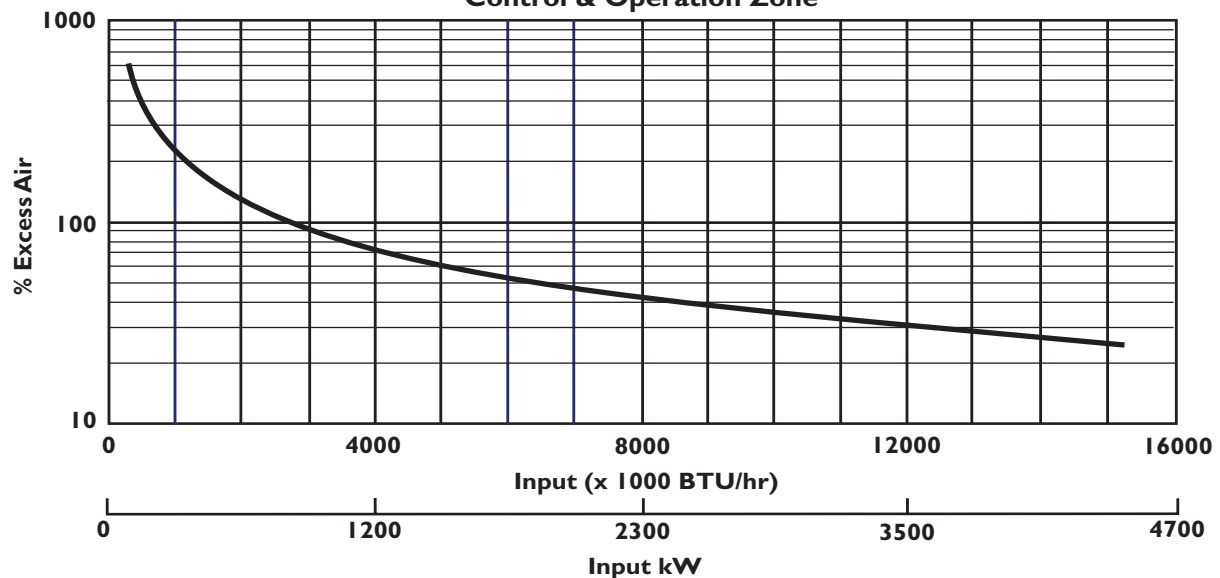
Main Specifications - RA1500

PARAMETER		SPECIFICATIONS
Maximum input, Btu/hr (kW) at neutral chamber conditions. (Natural Gas)		15,300,000 (4500)
Minimum input, Btu/hr (kW) • Lower inputs may be achieved. Contact factory.		350,000 (100)
Main Gas Inlet Pressure, "w.c. (mbar) • Fuel pressure at ratio regulator inlet.		20 to 55 (50 to 137)
High Fire Flame Length, inches (mm) • Measured from the outlet end of the combustor.		140 (3556)
Maximum Flame Velocity, ft/s (m/s) • Approximately 15% excess air at maximum input.		250 (75)
Maximum chamber temperature, °F (°C)	Alloy tube Block & Holder	1750 (950) 2200 (1200)
Flame detection		UV scanner only
Fuel		Natural Gas*

*For any other gas, contact Eclipse Combustion for orifice sizing.

- All information is based on laboratory testing in neutral (0.0" w.c.) chamber with standard combustor design. Different chamber conditions will affect the data.
- Maximum inputs are given for the standard combustion air blower without an air filter.
- All inputs based upon gross calorific values and standard conditions: 1 atmosphere, 70° F (21°C).
- Blower motor service factors greater than 1.0 may be required when firing into negative chamber pressure applications. For specific application questions, contact your Eclipse Combustion representative.
- Eclipse reserves the right to change the construction and/or configuration of our products at any time without being obliged to adjust earlier supplies accordingly.

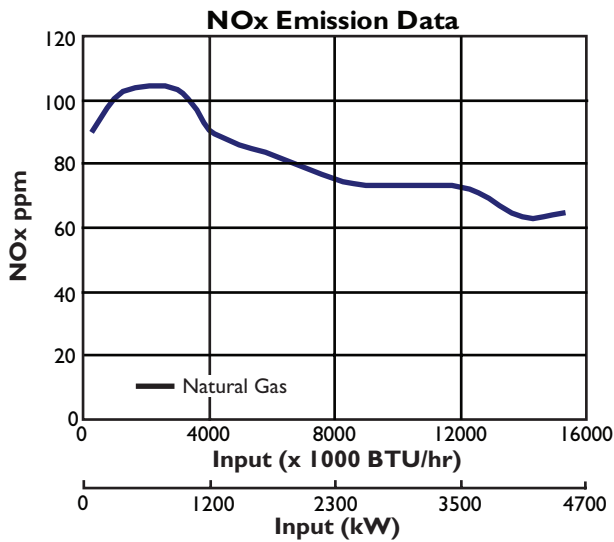
Control & Operation Zone



Medium Velocity Tube

Blower Model
60Hz, 8B (15" w.c. @ 190,000 scfh, 15 hp)

Specifications				
Parameter	"w.c.	(mbar)	60Hz Packaged Blower	
			Btu/hr	kW
Maximum Input vs. Chamber Pressure (Natural Gas)	-2.0	-5.0	16,335,000	4783
	-1.0	-2.5	15,825,000	4634
	0.0	0.0	15,300,000	4480
	1.0	2.5	14,755,000	4320
	2.0	5.0	14,190,000	4155



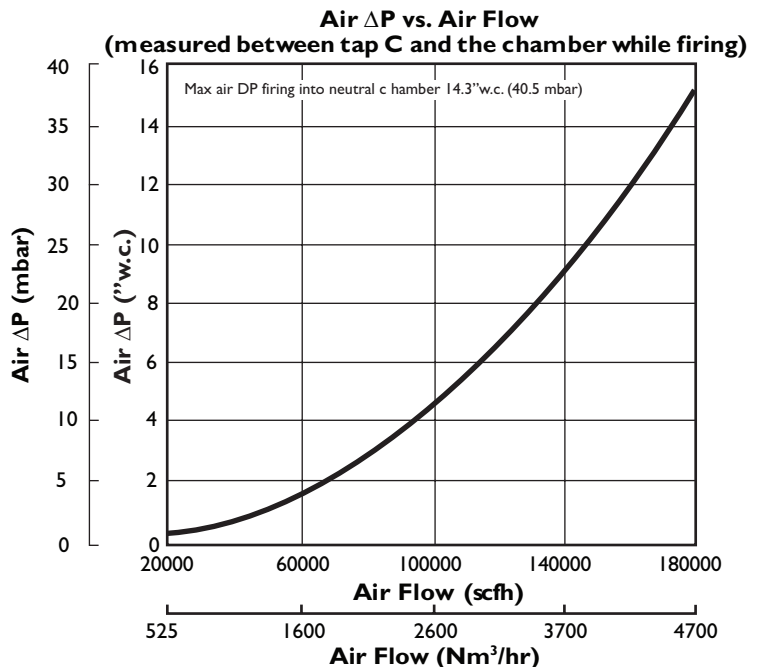
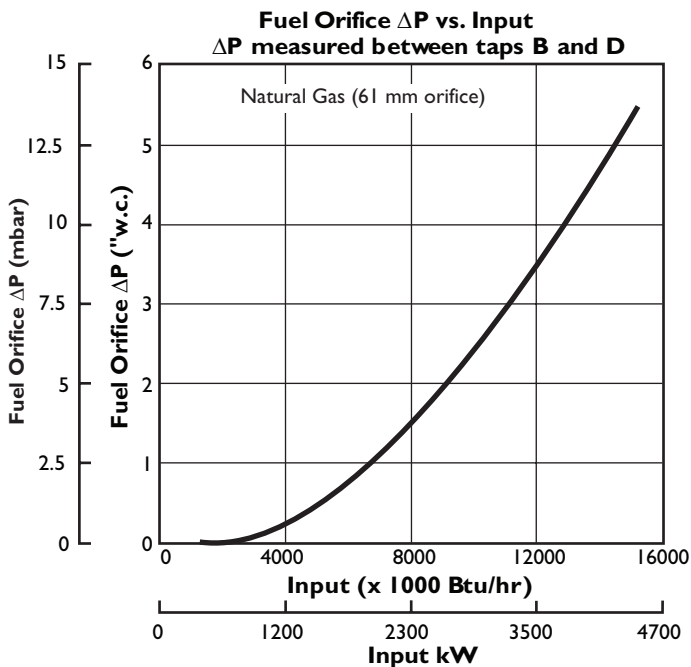
NOx emission data is given for:

- Ambient combustion air ~70°F (20°C)
- Less than 1000°F (538°C) firing chamber
- Minimal process air velocity
- ppm volume dry at 3% O₂
- Neutral chamber pressure

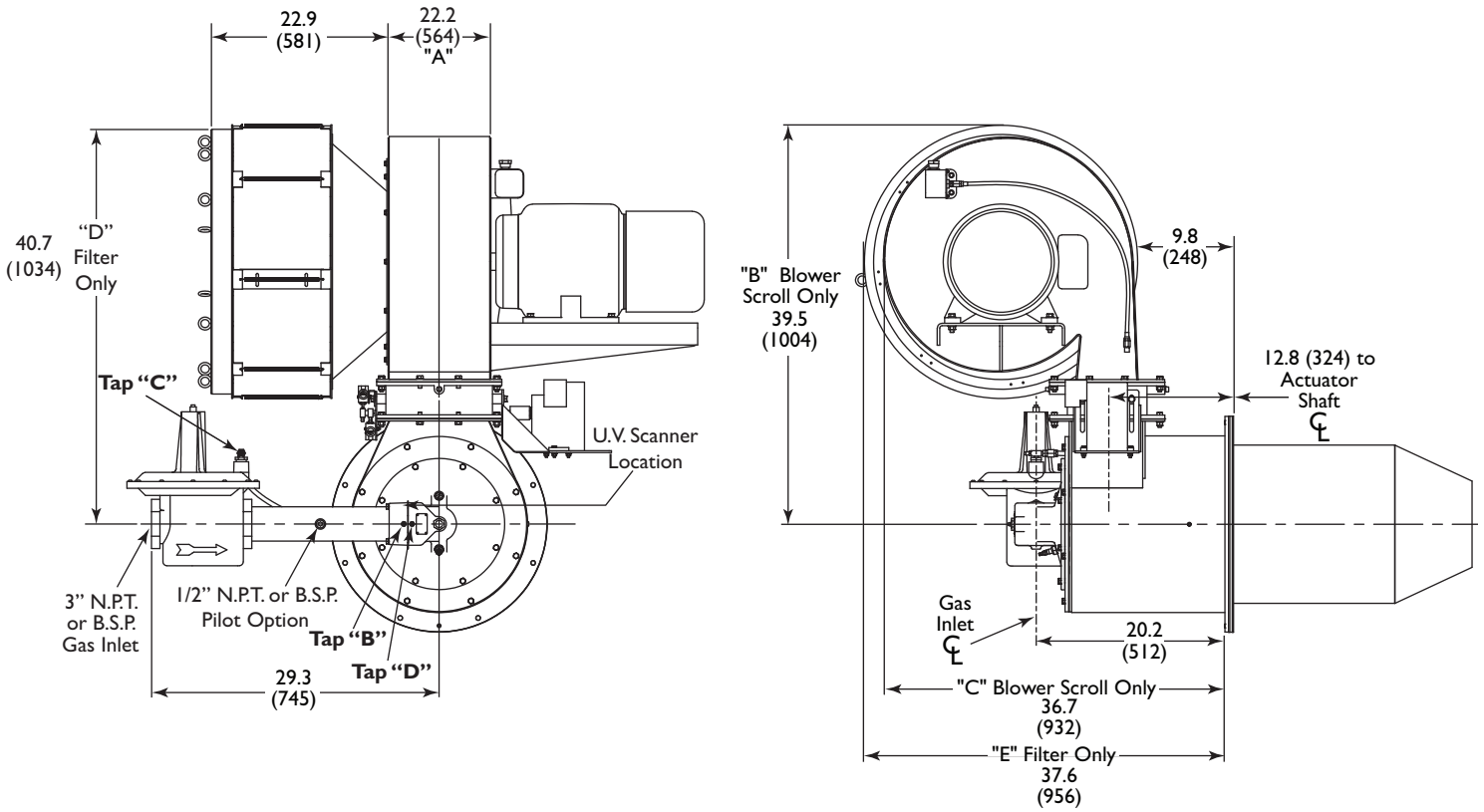
CO emission is largely influenced by chamber conditions. Contact your local Eclipse Combustion representative for an estimate of CO emission on your application.

Emissions are influenced by:

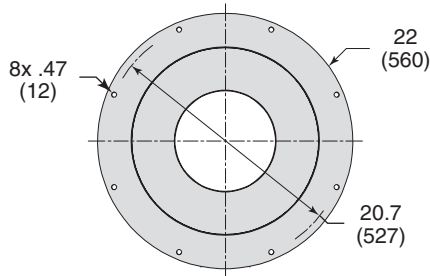
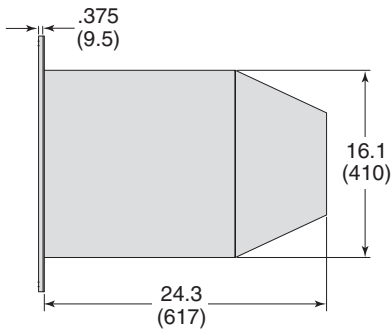
- Chamber conditions
- Fuel type
- Firing rate
- Ratio regulator adjustment
- Combustion air temperature



Dimensions Inches (mm)



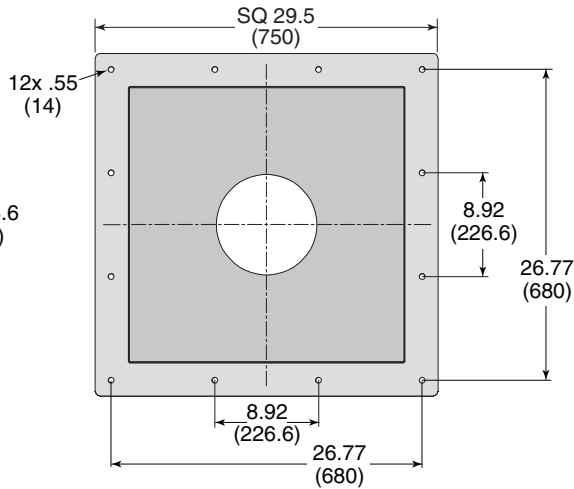
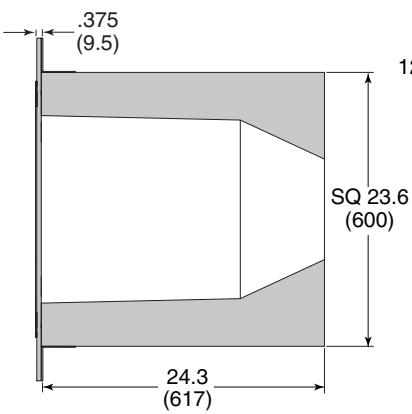
Exhaust outlet diameter : Medium Velocity: 260 (10.2")



Alloy Tube (AISI 310)

Weight : 44 lb (20 kg)

Max. Chamber Temp : 1,750 °F (950°C)



Refractory Block

(w/ 330 SS wrapper)

Weight : 1000 lb (454 kg)

Max. Chamber Temp : 2,200 °F (1204°C)



Offered By:

Power Equipment Company
2011 Williamsburg Road
Richmond, Virginia 23231
Phone (804) 236-3800
Fax (804) 236-3882

www.peconet.com